

# RÉDUCTION SIMPLE

mâle x femelle à coller

REDUCING BUSH | CASQUILLO REDUCCIÓN | VERLOOPRING



**SORO**  
POOL



**SORO**  
BUILD



**SORO**  
HOME



**SORO**  
GROW



**plimat**



Référence	d	d1	l	Z	Fig	PN	Gr
RS1612	16	12	14	2	A	16	2
RS2012	20	12	16	4	A	16	4,5
RS2016	20	16	16	2	A	16	2,5
RS2516	25	16	19	3	A	16	7,5
RS2520	25	20	19	3	A	16	4,5
RS3220	32	20	22	6	A	16	14,5
RS3225	32	25	22	3	A	16	9,5
RS4020	40	20	26	9	B	16	25
RS4025	40	25	26	7	A	16	27
RS4032	40	32	26	4	A	16	16
RS5020	50	20	31	14	B	16	38
RS5025	50	25	31	11	B	16	40
RS5032	50	32	31	9	B	16	40
RS5040	50	40	31	5	A	16	30
RS6325 <sup>1</sup>	63	25	38	19	B	16	86
RS6332	63	32	38	15	B	16	72
RS6340	63	40	38	12	B	16	76
RS6350	63	50	38	7	A	16	62
RS7532 <sup>1</sup>	75	32	44	22	B	16	135
RS7540	75	40	44	16	B	16	108
RS7550	75	50	44	13	B	16	105
RS7563	75	63	44	6	A	16	80
RS9050	90	50	51	20	B	16	157
RS9063	90	63	51	13	B	16	148
RS9075	90	75	51	7	A	16	140
RS11050	110	50	61	30	B	16	285
RS11063	110	63	61	23	B	16	289
RS11075	110	75	61	17	B	16	297
RS11090	110	90	61	10	A	16	268
RS110100 <sup>1</sup>	110	100	61	5	A	16	159
RS12575	125	75	69	25	B	16	460
RS12590	125	90	69	17	B	16	430
RS125110	125	110	69	7	A	16	266
RS14090	140	90	76	24	B	16	584
RS140110	140	110	76	14	B	16	485
RS140125	140	125	76	7	A	16	333

<sup>1</sup> = non fabriqué par PLIMAT

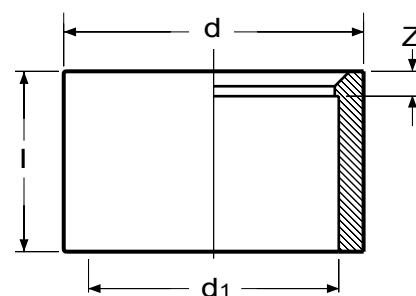


FIGURE A

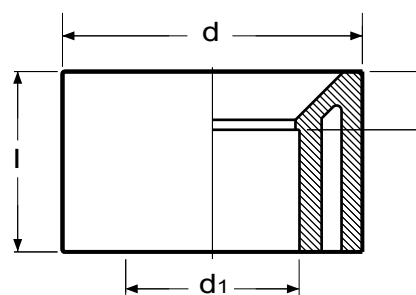
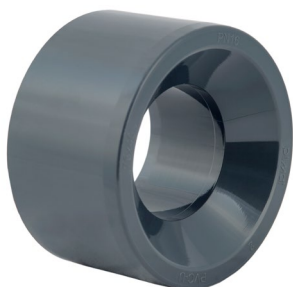


FIGURE B

# RÉDUCTION SIMPLE

mâle x femelle à coller

REDUCING BUSH | CASQUILLO REDUCCIÓN | VERLOOPRING



**SORO**  
POOL



**SORO**  
BUILD



**SORO**  
HOME



**SORO**  
GROW



**plimat**



Référence	d	d1	l	Z	Fig	PN	Gr
RS16090	160	90	86	34	B	16	860
RS160110	160	110	86	24	B	16	855
RS160125	160	125	86	20	B	16	760
RS160140	160	140	86	9	A	16	562
RS200110	200	110	106	44	B	10	1611
RS200125 <sup>1</sup>	200	125	106	37	B	10	1811
RS200140	200	140	106	29	B	10	1650
RS200160 <sup>1</sup>	200	160	106	20	B	10	1360
RS22590 <sup>1</sup>	225	90	119	67	B	10	2490
RS225110	225	110	118,5	57	B	10	2340
RS225125	225	125	118,5	50	B	10	2400
RS225140 <sup>1</sup>	225	140	119	41	B	10	2360
RS225160 <sup>1</sup>	225	160	119	33	B	10	1700
RS225200	225	200	118,5	12	A	10	1350
RS250160	250	160	131	44	B	10	3200
RS250200	250	200	131	24	B	10	2760
RS250225	250	225	131	12	A	10	1665
RS280250 <sup>1</sup>	280	250	147	15	A	10	2640
RS315160 <sup>1</sup>	315	160	163	77	B	6	5600
RS315200 <sup>1</sup>	315	200	165	58	B	6	7740
RS315225 <sup>1</sup>	315	225	165	33	B	6	7400
RS315250 <sup>1</sup>	315	250	163,5	31,5	B	6	5610
RS315280 <sup>1</sup>	315	280	163	17	A	6	3600
RS355315 <sup>1</sup>	355	315	184	21	A	6	5500
RS400250 <sup>1</sup>	400	250	206	72	B	6	10800
RS400280 <sup>1</sup>	400	280	206	60	B	6	11240
RS400315 <sup>1</sup>	400	315	206	41	B	6	10800
RS400355 <sup>1</sup>	400	355	206	21	A	6	7650

<sup>1</sup> = non fabriqué par PLIMAT

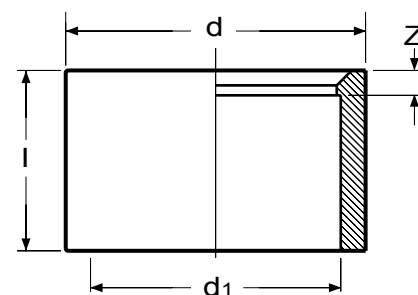


FIGURE A

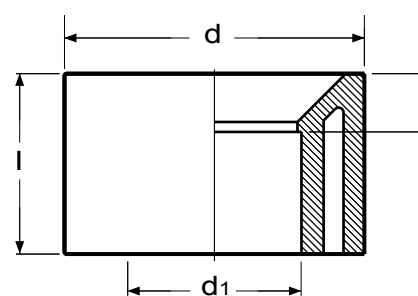


FIGURE B